

Coachmen proudly presents

# NORTH RIDGE

NORTH RIDGE  
by Coachmen



## THE BEST VALUE FOR YOUR MONEY.

The main slide of the 353LPS has an extra large booth dinette, plush and comfortable airbed sofa with storage underneath, and overhead cabinets for extra storage. Also you can see the wide open living space and one of the three 32" TV's that come standard in the 353LPS. The North Ridge will give you the best value for your money because we only use quality materials."





## MAXIMUM SPACE & LIVABILITY.

The North Ridge offers features that you won't find on any other RV. The 353LPS has an industry first bathroom slide that makes the bathroom more spacious and usable. Also you can see drawers underneath the vanity. Try finding those in the competition!

The North Ridge kitchen was designed to feed even the largest family. It comes complete with our custom kitchen cabinets which include hardwood maple cabinet doors for maximum durability and elegance. Drawers throughout the coach use full extension ball bearing drawer guides just like the ones in your home.





## COMFORTABLE & DURABLE.

Taking the whole family is important, that's why the North Ridge from Coachmen was designed with the traveling family in mind. The 353LPS, shown here, has five slides for maximum space and livability. Not only that but, it has a rear kids room with full size queen loft, airbed sofa, and standard 32" TV as well as plenty of storage."





## NO SHORTAGE OF STORAGE.

The 290RKD, shown with optional recliners, provides an abundant amount of counter and storage space. With standard features like solid surface counter tops, dinette table and chairs, independent front jacks with dual motors, and slam latch baggage doors, you can be sure you are getting the best value for your money.

The North Ridge has the most dynamic graphics in the industry. You will turn heads and be noticed when you pull into the camp ground with a North Ridge. Be sure to ask about our full body paint package too!





## CARE & COMFORT FOR THOSE YOU LOVE.

The North Ridge bedroom leaves nothing to be desired. It includes our spa inspired bedding that comes with bed scarf and accent pillow. The best part is it's all reversible so you can change your look anytime you want! Also notice the louvered doors for the washer dryer cabinet that has ample space to hold a stackable washer/dryer.



## INTERIOR FEATURES

- A. Autumn Birch Custom Kitchen Cabinets shown in the 290RKD with the optional recliners.
- B. Porcelain foot flush toilet that won't streak or stain like plastic
- C. The Magic Night sleep system sofa is standard in every North Ridge. There is no need to strain your back and unfold the sofa. Thanks to a convenient remote, the sofa unfolds and inflates itself with just the click of a button. There's even a storage drawer underneath!
- D. Residential full-extension ball bearing drawer guides are standard on every drawer to give you total accessibility



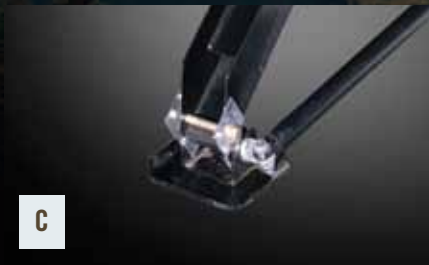
## EXTERIOR FEATURES



A



B



C



D



E



F

A. Tinted windows block UV rays protecting your investment by preventing fading of the materials on the interior of your coach. They also provide a visual barrier adding to the security of your coach.

B. Our gel coated fiberglass front cap works with our specially engineered frame to create Turn Tec technology. This gives you the maximum turning radius with no need for an expensive slider hitch.

C. Standard rear electric jacks make set up a breeze. With the push of a button your coach is set up and secure.

D. Exterior entertainment center on the 353LPS includes a 32" TV, DVD/CD/Stereo, refrigerator, and portable table to keep the whole campground entertained!

E. Looking for an easy set up?? Take a look at the North Ridge docking station. It's got everything from winterization valves, tank pull handles, phone, satellite, cable, city water fill, black tank, flush, outside shower, a light and 110 outlet. All those features are located in a one piece station that won't leak!

F. Our engineered drop frame gives each North Ridge a cavernous storage area. Beware of competitors who try to save costs. They use a straight frame that cuts your storage in half! Our storage is large and open with no obstacles in your way.

# NORTH RIDGE STANDARDS & OPTIONS

## INTERIOR

- Autumn Birch Custom Cabinets
- Armstrong Residential No Wax Flooring
- Residential carpet with padding
- 32" HD LCD TV
- FM/CD/DVD player
- Digital TV antenna with booster
- Magic Night sleep system air mattress hide-a-bed sofa
- (2) swivel, rocker recliners with end table (N/A 353 LPS, 340DBQ, Optional 290RKD)
- Solid hardwood slide out fascias
- Full extension ball bearing drawer guides
- 6"7" tall living area slide outs with oversized overhead cabinets
- Day/night shades (living area)
- Oil rubbed bronze hardware
- Ceiling fan with tulip lighting
- Systems monitor panel
- Satellite prep
- Carbon monoxide detector

## EXTERIOR

- Aluminum wheels
- Hydraulic slide outs
- Extra large drop frame pass through storage area
- Extra large entry handle
- Tinted safety glass windows
- Undermount spare tire and carrier
- Independent Power front jacks with Dual Motors
- Power awning
- Power rear jacks
- 7,000 lbs axles with 8 lug hubs
- Trail air equa flex suspension
- Patio scare lights
- 50 AMP service and detachable power cord
- 30" entry door
- Extra Large, Insulated, Radius Bus style Slam Latch Baggage Doors
- Exclusive one piece docking station

- Exterior Entertainment Center with DVD Player, Speakers, 32" TV, mini Fridge, Campers EZ Table (353LPS only)
- Black tank flush
- Outside speakers
- Snap jack pins
- Laminated floor construction
- Ducted forced air heated holding tanks, water lines, and dump valves along with enclosed and insulated underbelly
- Attic vents
- 40,000 BTU furnace with automatic ignition
- 15,000 BTU air condition with quick cool
- 10 gal. DSI gas/electric water heater
- Engineered frame and front cap with Turn Tec technology
- Aluminum framed vacuum bonded sidewalls
- Whole coach water filtration system
- 12V battery disconnect
- Roof ladder

## GALLEY

- 22" oven with high output range and automatic igniter
- Solid Surface Countertops
- Extra large 8 cubic foot double door refrigerator with Wood Insert
- Microwave
- Extra large full extension drawers
- Full Padded Back chairs with Storage underneath and Dinette Table
- Lighted power range hood

## BEDROOM

- Residential 60"x 80" deluxe pillow top queen bed
- Over head reading lights
- Windows for cross ventilation
- Residential bedding with pillow shams
- Designer fabric head board
- Extra large dresser with residential sized drawers

- Extra deep front wardrobe with mirrored doors and shoe storage
- Armoire with washer/dryer prep

## BATHROOM

- Power bath vent
- Neo-angled shower with glass surround and adjustable shower head
- Residential 40" vanity height with mirrored medicine cabinet
- Porcelain toilet with foot flush pedal
- Heat and air conditioning ducts in every bathroom for comfort

## COACHMEN CONVENIENCE PACKAGE (STANDARD)

- Designer fabric bedroom headboard
- (2) bedside windows in slideout
- 12v FM/CD/DVD player
- RS 6 satellite prep
- 50 AMP service
- 10 gallon DSI 110/12v water heater
- Deluxe porcelain toilet
- Skydome over shower
- 8' large double door refrigerator
- Electric front jacks
- Fold away entry handle
- Rear roof ladder
- (2) patio scare lights
- Black tank flush
- Under mount spare tire & carrier
- Air mattress hide-a-bed sofa
- Outside shower
- Washer/dryer prep
- Outside speakers
- Power vent fan
- Ceiling fan with light kit
- 15,000 BTU A/C with quick cool
- Deep tint safety glass windows
- Microwave
- 22" oven w/ broiler
- High output range with automatic igniter

- Double sink with high rise faucet
- Cabinet toe kicks
- Water heater bypass
- Deluxe queen (60"x80") innerspring pillow top mattress
- Digital TV antenna with booster

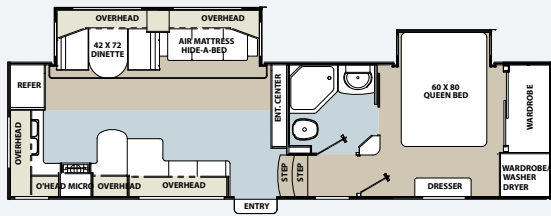
## LUXURY PACKAGE (STANDARD)

- Turn Tec front cap & chamford frame
- Drop frame pass-thru storage compartment
- Electric rear stabilizer jacks
- Exterior convenience center
- 12V electric awning
- 32" HD LCD TV
- Full extension drawer glides
- All wood slide out fascia
- Custom Kitchen Cabinets
- Bus style slam latch baggage doors

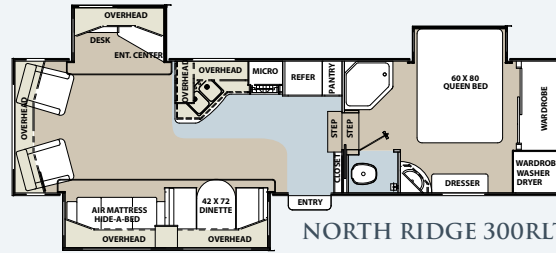
## POPULAR OPTIONS

- Dual pane tinted safety glass windows
- Slide awning package (Double slides)
- Slide awning package (Triple slides)
- Slide awning package (Quad slides)
- Booth Dinette
- Central Vac
- High-back desk chair
- (2) jack knife sofas IPO bottom bunks (340DBQ only)
- (2) recliners IPO 1-shaped sofa (290RKD only)
- 12V 19" bedroom LCD TV
- Electric fireplace
- 2nd 13.5k BTU A/C in bedroom
- Power vent fan
- Generator ready
- Onan Marquis Gold 5.5k LP generator
- CSA upfit
- Roadside assistance
- Full Body Paint Package

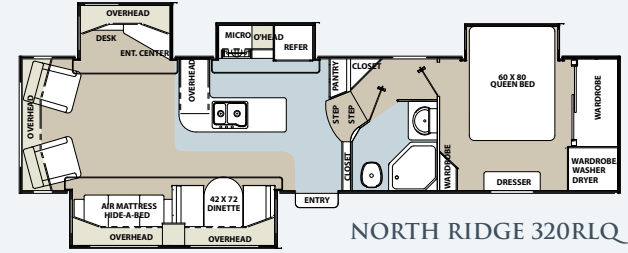
# NORTH RIDGE FLOORPLANS



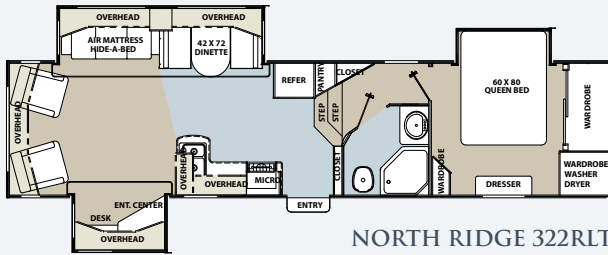
NORTH RIDGE 290RKD



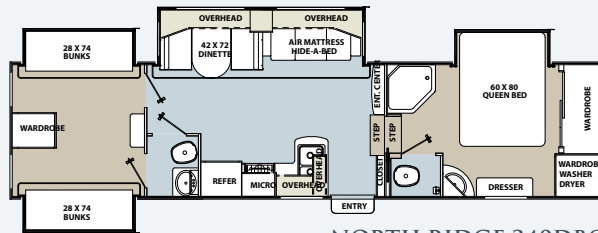
NORTH RIDGE 300RLT



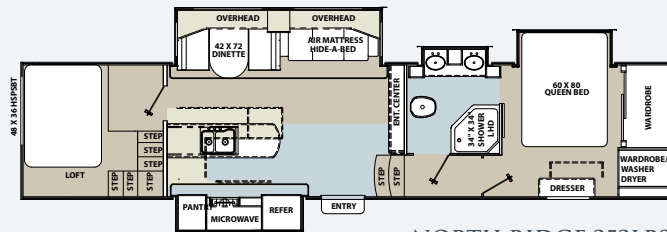
NORTH RIDGE 320RLQ



NORTH RIDGE 322RLT



NORTH RIDGE 340DBQ



NORTH RIDGE 353LPS

## NORTH RIDGE SPECIFICATIONS

Floorplan	Length	UWV	Hitch Weight	GVWR	Fresh Water	Grey Water	Black Water
290RKD	33' 6"	8,705	2,290	14,000	77	90	45
300RLT	36' 10"	10,050	2,040	15,000	77	90	45
322RLT	36'	9,945	2,210	15,000	77	90	45
320RLQ	37' 2"	10,405	2,320	15,000	77	90	45
340DBQ	37' 1"	10,690	2,500	15,000	77	90	45
353LPS	39' 10"	12,200	2,500	15,500	77	90	45

## FREE ROADSIDE ASSISTANCE

*Coachmen provides one year of free Travel Easy™ emergency roadside assistance for those who buy a new Coachmen RV. Administered by Coach-Net®, this service gives Coachmen owners 24/7 access to operational, technical and emergency road services, including towing, fuel delivery, jump starts, lockout service, tire changes, mobile mechanic and unlimited technical advice. So no matter where you go, we're ready to help!*



## BIG BENEFITS FOR NEW OWNERS

*Owners club discounts and more — A free one-year membership in the Coachmen Owners Association comes with the purchase of any Coachmen product. This add-on value not only provides a host of travel services and campground discounts, but also a 24/7 online service that locates needed services while offering member savings at more than 180,000 merchants across the country. And, of course, the COA is an excellent way to share experiences with other Coachmen owners through rallies and caravans.*



Coachmen Recreational Vehicle, a division of Forest River  
P.O. Box 30, Middlebury, IN 46540

All specifications contained herein are based on the latest product information at time of printing. Forest River reserves the right to make changes in colors, materials, equipment and specifications at any time Without notice and assumes no responsibility for any errors in this brochure. Litho: U.S.A. FOR 0737

YOUR NORTH RIDGE DEALER

Scan this barcode using a QR Reader on your smart phone to learn more about Forest River.

